



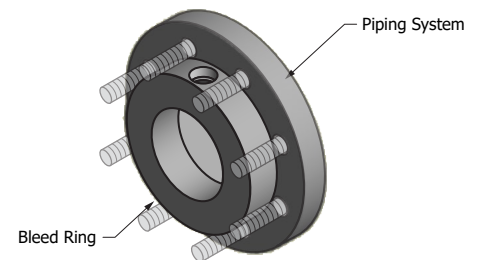
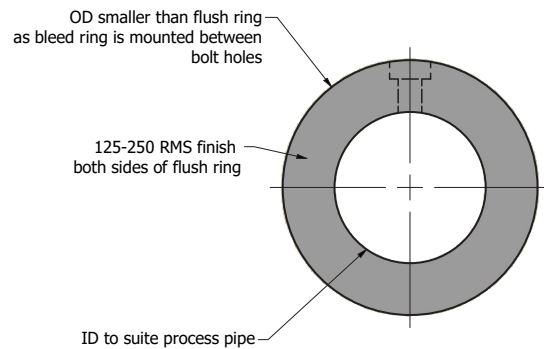
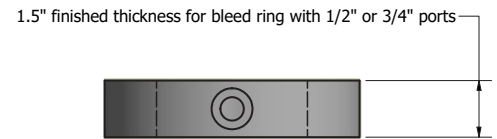
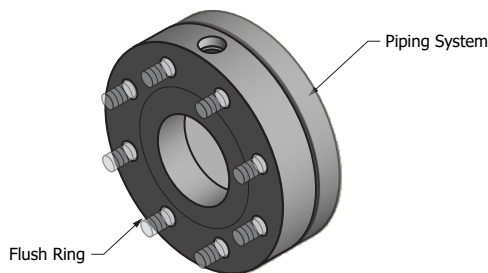
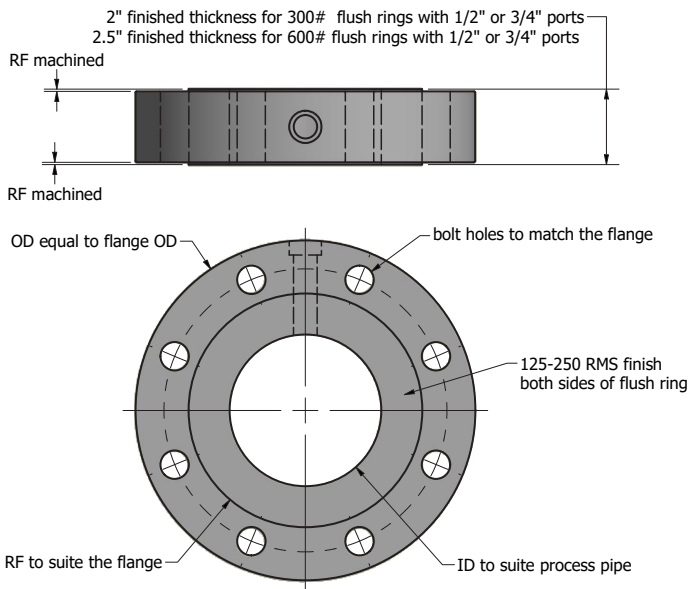
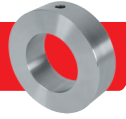
FLUSH/BLEED RING COMPARISON

Flush Ring



OR

Bleed Ring



Notes:

- Material requirements are greater for flush ring as compared with bleed ring. OD of a flush ring and thickness are significantly greater than those of bleed ring.
- Raw materials sourced for production are significantly more expensive for flush rings due to greater OD and greater thickness
- Flush Rings require significantly greater manufacturing time, as compared to a simple bleed ring.



**American
Thermowell**



**Specializing in instrumentation
and process control hardware.**

- ✓ Thermowells
- ✓ Bleed & Flush Rings
- ✓ Orifice Plates
- ✓ Valves

